

Flange bearing GBL-()

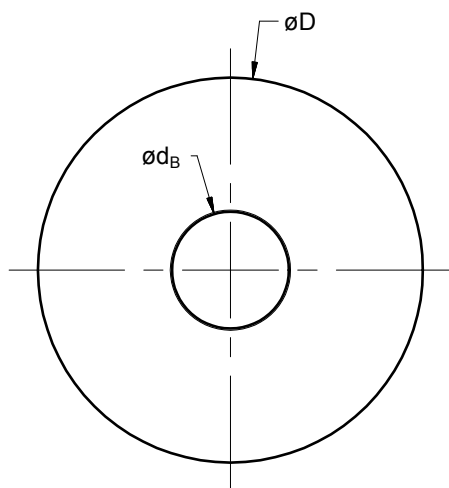
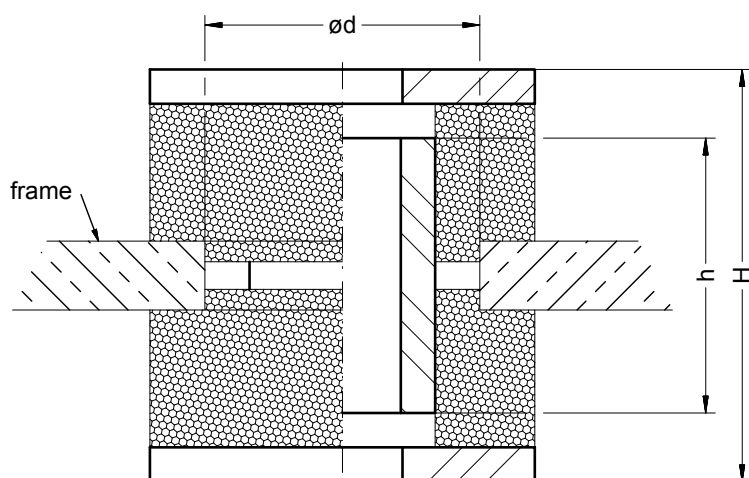
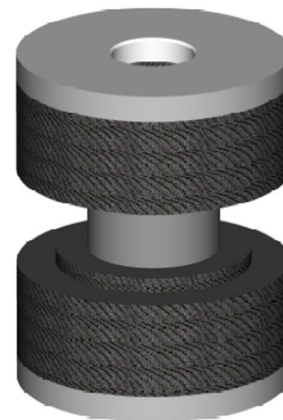


Applications

- Flange bearing for the resilient suspension of i.e. tank systems, cooling units, generator sets, ...

Element consists of:

- 2x all-metal-cushion
- 1x sleeve
- 2x washer or cushion seat (depending on type)



Description:

- damping cushion of stainless steel wire
- washers and sleeve of steel, zinc coated
- cushion seat of steel, KTL coated
- high static and dynamic load capacity
- long lifetime
- maintenance free
- compact design

Flange bearings listed in the table are only standard elements. Further elements can be asked at our technicians.

High and diameter of the plugged sleeve always depends on the customers application. They will be adjusted after consulting.

Type	dimensions in mm					static load in daN
	H	h	$\varnothing D$	$\varnothing d$	$\varnothing d_B$	
GBL-15-3	depending on application		28	24	9	5 – 15
GBL-35-3			38	20,5	9	5 – 35
GBL-100-2			45	27	12,2	10 – 100
GBL-300-2			56	40	17	50 – 300
GBL-900-8			80	47	21	50 – 900