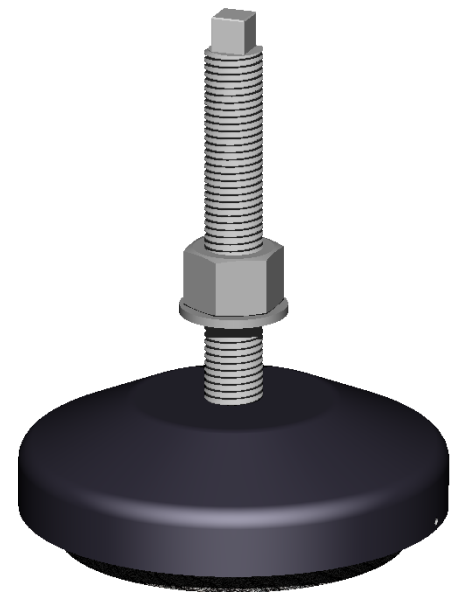
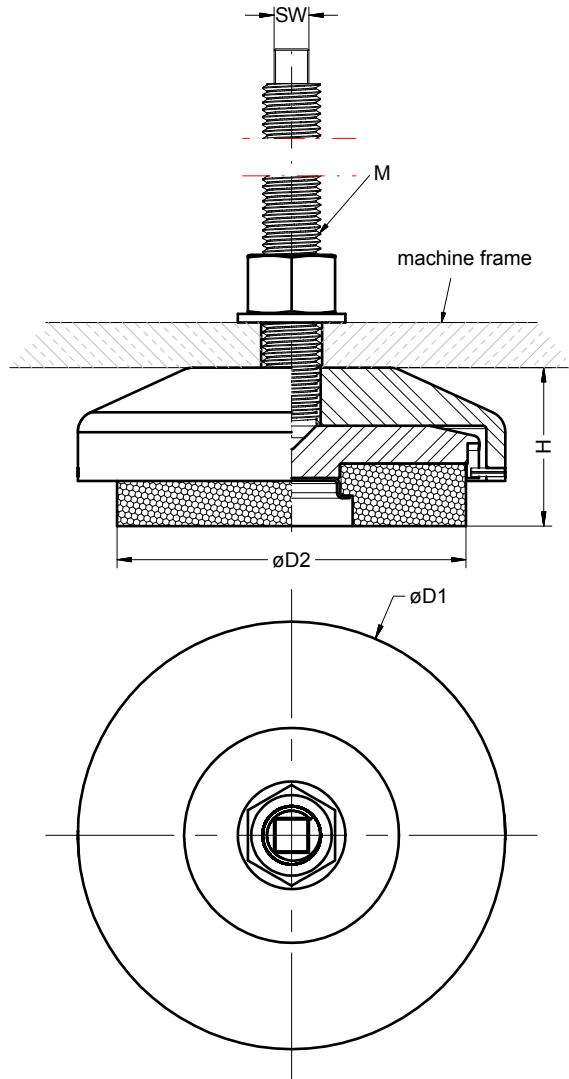


all-metal-damper GST-()-x



Applications

- Resilient suspension of turning, milling and lapping machines, presses, grinding machines etc.



Description

- Housing, cushion seat of steel, KTL coated
- Damping cushion of stainless steel wire
- Screw, washer and nut of steel, zinc coated
- High static and dynamic load capacity
- Integrated levelling, compact design
- long lifetime
- maintenance free

Accessories

- Anti-slip mat (Safety-Walk™) ARS
- Floor attachment BBF

Type	Dimensions [mm]					Stat. load [daN]	Frequency [Hz]
	Ø D1	Ø D2	M	H	SW		
GST- 250 -1	84	60	M12	31	9	30 - 250	25 - 30
GST- 250 -2				35		20 - 250	15 - 20
GST- 250 -3				31		30 - 250	35 - 40
GST- 900 -1	92	72	M16	46	10	50 - 900	15 - 20
GST- 3000 -1				35		200 -3000	25 - 30
GST- 3000 -2				35		35 - 40	
GST- 3500 -1	147	121	M20	44	12	500 -3500	25 - 30
GST- 3500 -2				55		15 - 20	
GST- 6000 -1	186	159	M27	60	41	1500 -6000	20 - 25
GST- 6000 -2				71		15 - 20	
GST- 8000 -1				71		1500 -8000	18 - 23

Levelling bolts available with square and hexagonal head

M27 exclusively available in hexagonal form